

# SEEKING COMMUNITY DIRECTION.

## Operating Levy – 2025 Special Election

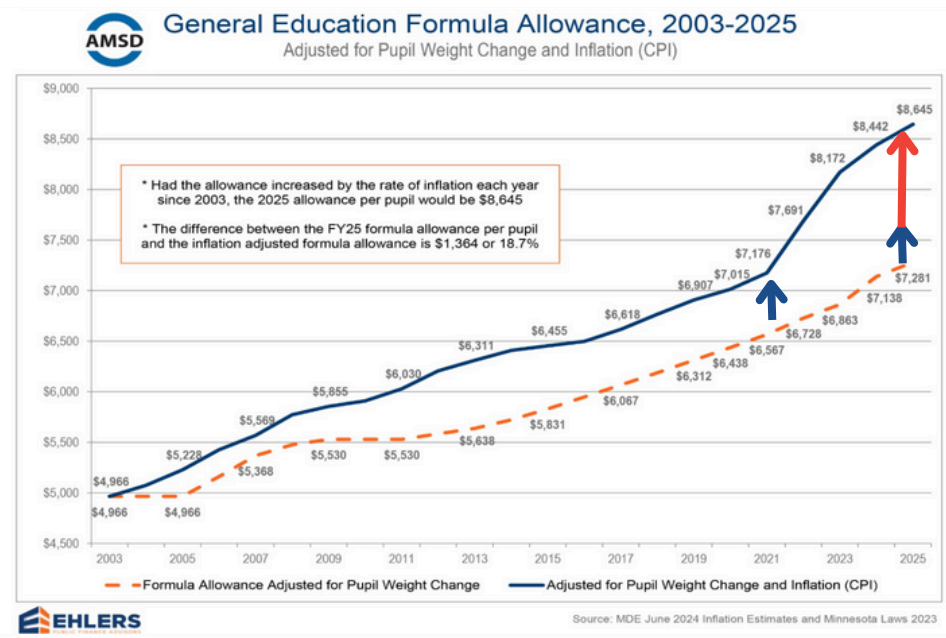
Early Voting Starts September 19: In-Person or by Mail | Election Day November 4: In-Person at West Middle School



The School Board for Shakopee Public Schools unanimously approved a two question operating levy as part of a special election on November 4, 2025.

### THE WHY

Over the past four years, State funding for education has failed to keep pace with inflation. **Had State funding (General Education Formula Allowance) increased at the rate of inflation between 2021 and 2025, Shakopee would currently be receiving \$6,301,648 more in state funding each year.**



*"Schools are a **partnership** with the community. One can't thrive without the other. Our goal is to **retain** our dedicated staff, support **each and every student** and maintain the quality educational experiences and manageable class sizes we, as a district, have worked so hard to provide."*

- Shakopee Public Schools Board Chair, Jeff Smith



**STATE FUNDING FAILS TO KEEP PACE WITH INFLATION — COMPARISON DISTRICTS ARE MAKING BUDGET CUTS**

Rosemount - Apple Valley - Eagan  
Hopkins Burnsville  
Edina Eden Prairie  
Bloomington Prior Lake  
Minnetonka Lakeville  
Farmington Eastern Carver

The above districts have made a combined  
**\$98 million**  
**in budget cuts**  
(2024-25 and 2025-26 school years).

**Shakopee Public Schools budget is **balanced** in the 2024-25/2025-26 school years.**

There is a projected:  
● **\$7-9 million budget deficit** in the 2026-27 school year  
**AND**  
● **an additional \$1-4 million deficit** in 2027-28.

## Operating Levy - Question One

Generates \$620 per pupil in revenue - total annual revenue of \$5,000,052.

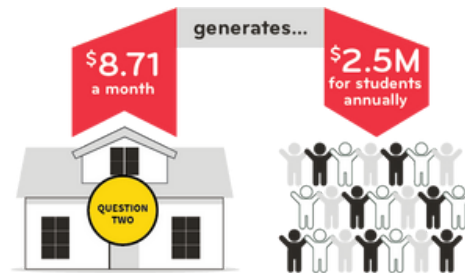


Question One is tax neutral (see tax table to the right) due to:

- \$5,160,455 in annual taxes on construction debt being paid off in 2025.
- \$5,000,052 in annual taxes would begin in 2026 if Question One is approved by the voters.

## Operating Levy - Question Two

Generates \$310 per pupil in revenue - total annual revenue of \$2,500,026.



If Question Two is approved by the voters, it will bring Shakopee Public Schools to the maximum allowed for a school district operating levy. Question Two cannot pass unless Question One is approved by the voters.

## What does an operating levy fund?

Levy dollars pay for educational programs and day-to-day operations of schools, including the salaries of teachers and support staff. **Teacher and support staff salaries and benefits make up nearly 80% of district operating expenses.**



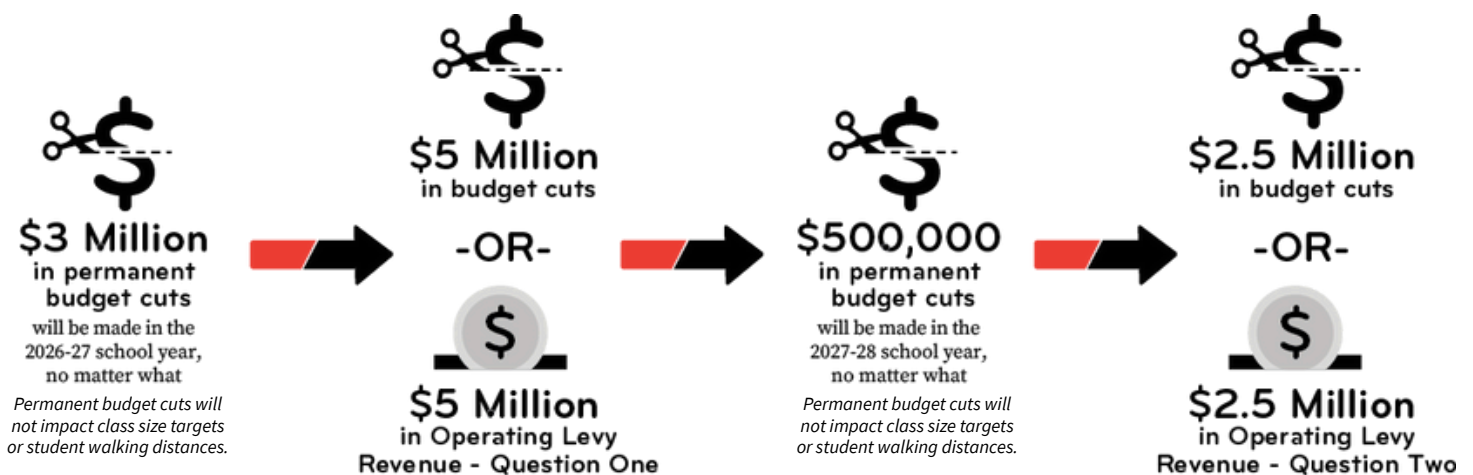
## Most Frequent Question - What Happens If...



If the levy is **approved** by the voters, the school district will **continue to provide similar levels of services moving forward.**



If the levy is **not approved** by the voters, the school district will **need to make budget cuts to programming, services and staffing, which will result in larger class sizes and a decrease in services across the district.**



## Question One: Tax Neutral Operating Levy



Property Type	Estimated Market Value	Question 1 Estimated Taxes for Proposed Referendum	Expiring Debt Service After Pay 2025	Question 1 Net Voter Approved Change
Residential Homestead	\$100,000	\$52	-\$34	\$1.56
	200,000	105	-92	1.04
	300,000	157	-150	0.53
	400,000	209	-209	0.01
	500,000	261	-267	-0.51
	600,000	314	-335	-1.80
	800,000	418	-469	-4.27
	1,000,000	523	-603	-6.73
	1,200,000	627	-737	-9.20
Commercial - Industrial	\$250,000	\$131	-\$156	-\$2.10
	500,000	261	-339	-6.49
	1,000,000	523	-706	-15.28
	1,200,000	784	-1,073	-24.07
	2,000,000	1,045	-1,439	-32.86
Apartments	\$250,000	\$131	-\$168	-\$3.08
	500,000	261	-335	-6.16
	1,000,000	523	-670	-12.32
	1,200,000	784	-1,006	-18.48
	2,000,000	1,045	-1,341	-24.64
Agricultural Homestead	\$250,000	\$0	-\$20	\$1.68
	500,000	0	-40	-3.35
	750,000	0	-60	-5.03
	1,000,000	0	-80	-6.70

## Question Two: Going to the Maximum Allowed

Property Type	Estimated Market Value	Question 2: Estimated Taxes for Proposed Referendum <i>Annual</i>	Question 2: Estimated Taxes for Proposed Referendum <i>Monthly</i>
Residential Homestead	\$100,000	\$26	\$2.18
	200,000	52	4.35
	300,000	78	6.53
	400,000	105	8.71
	500,000	131	10.89
	600,000	157	13.06
	800,000	209	17.42
	1,000,000	261	21.77
	1,200,000	314	26.13
Commercial - Industrial	\$250,000	\$65	\$5.44
	500,000	131	10.89
	1,000,000	261	21.77
	1,200,000	392	32.66
	2,000,000	523	43.55
Apartments	\$250,000	\$65	\$5.44
	500,000	131	10.89
	1,000,000	261	21.77
	1,200,000	392	32.66
	2,000,000	523	43.55
Agricultural Homestead	\$1 - 1,000,000	All values are \$0	All values are \$0



## UNDERSTANDING THE BALLOT LANGUAGE

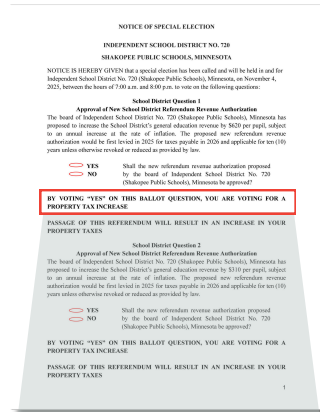
Every taxpayer in the district will receive a sample ballot mailed to their address. By law, the ballot will notate the per pupil amount of the levy being voted on.

**The per pupil amount is not the individual tax impact for a household.**

Additionally, the ballot for Question One will not state that the levy is 'tax-neutral.' This is because the type of tax that's expiring is different from the new tax.

The old tax, which is for construction debt, is calculated using *Net Tax Capacity*.

The proposed new tax, an operating levy, is calculated using *Referendum Market Value*. Since these two methods of calculating taxes are different, the ballot cannot legally state the new levy is tax-neutral, **even though the total annual taxes do not change from 2025 to 2026.**

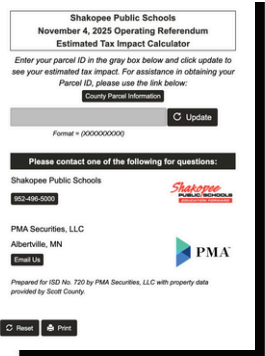


**LEGALLY REQUIRED LANGUAGE:**  
**BY VOTING "YES" ON THIS BALLOT QUESTION, YOU ARE VOTING FOR A PROPERTY TAX INCREASE.**

## ONLINE TAX CALCULATOR

To see the specific tax impact on your property, use the online tax calculator provided by PMA Securities, LLC. This tool uses property data from Scott County to give a precise estimate.

To get started, please have the property's parcel number ready.



### ACCESS THE TAX CALCULATOR

A tax calculator is available on [bit.ly/SPS25TaxCalc](https://bit.ly/SPS25TaxCalc) or by scanning the QR code.



### OBTAIN YOUR PARCEL NUMBER

A parcel number can be obtained from the Scott County website by visiting: [bit.ly/FindMyParcel\\_Shako](https://bit.ly/FindMyParcel_Shako) or scanning the QR code.



## HOW TO VOTE

**ABSENTEE/EARLY VOTING:** Absentee voting begins on September 19, 2025 and can be done in-person at the Shakopee Public Schools District Office located at 1200 Shakopee Town Square until November 3, 2025.

### In-Person Hours

- 8:00 AM - 4:00 PM M-F, excluding holidays
- Saturday, October 4: 9:00AM - 3:00PM
- Saturday, November 1: 9:00AM - 3:00PM
- Monday, November 3: 8:00AM - 5:00PM

**ELECTION DAY:** The special election will be held on Tuesday, November 4, 2025 from 7:00AM - 8:00PM at West Middle School, 200 10th Ave E, Shakopee.

Learn more about your voting options at [mnvotes.org](https://mnvotes.org).



Taxpayers may also vote by mail. Taxpayers that reside in the City of Prior Lake will vote at the Prior Lake City Hall.

# VOTE 2025

**LEARN MORE:**  
**SHAKOPEE PUBLIC SCHOOLS**  
**OPERATING LEVY -**  
**2025 SPECIAL ELECTION**

Scan the QR code or visit [ShakopeeLevy.org](https://ShakopeeLevy.org)

**Early voting begins September 19, 2025.**

*Vote on November 4, 2025.*

